

The “Perfect Storm” of Ocular Surface Disease

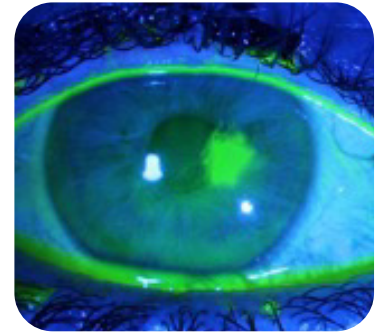
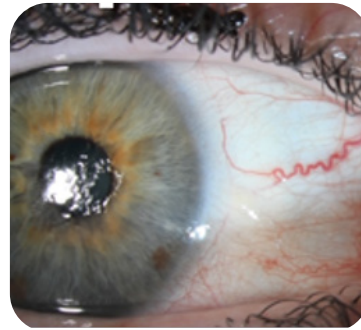
Giacomina Massaro-Giordano, MD

INITIAL PRESENTATION

A 57-year-old female presented to the clinic with Sjogren’s syndrome, Herpes Keratitis, and neurotrophic keratitis. She had also undergone LASIK and had allergic conjunctivitis, creating the “perfect storm” of ocular surface disease.

ENTRANCE EXAM

Slit lamp exam revealed corneal punctate stain consistent with dry eye and a corneal ulcer that may be neurotrophic.



ENTRANCE EXAM

slit lamp exam revealed corneal punctate stain and a corneal ulcer

TREATMENT PLAN

I prescribed autologous serum tears at 50% concentration to be used four times per day, anti-inflammatory medications, and a mini scleral lens, instructing the patient to fill the bowl of the lens with the serum tears prior to insertion.

FOLLOW UP

The patient returned for follow up after five weeks of treatment. Staining showed that the corneal surface was much smoother with significantly less punctate staining.



FOLLOW UP

staining showed a much smoother corneal surface with significantly less punctate staining